



PARISH SCHEDULE

SUNDAY LITURGY | at 11:00 AM

St. Sharbel Maronite Catholic Church

600 Mount Vernon Church Road
Raleigh, NC 27614

Tel: (919)917-7597

Email: abouna@saintsharbelchurch.org

website: www.saintsharbelchurch.org

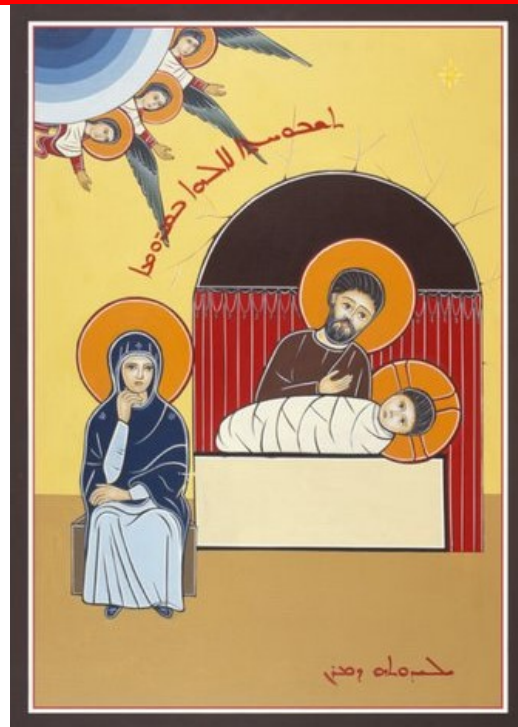
Pastor: Rev. Robert Youssef Farah

Sunday Liturgy: 11:00 AM

Saturday Liturgy: 5:00 PM

Wednesday & Friday Liturgy: 6:30 PM

Thursday Adoration: 6:30 PM



Donate Now PayPal

MasterCard VISA DISCOVER NETWORK

Donate Now PayPal

MasterCard VISA DISCOVER NETWORK

Please remember your Church by maintaining your donation through our Online Service by visiting our Website and clicking on the following link:

<http://saintsharbelchurch.org/donate/>

Your weekly donation will maintain our mission in her journey and keep our doors open.

amazon
smile

Support St Sharbel Mission by shopping at AmazonSmile.


When you shop at AmazonSmile, Amazon will donate to St Sharbel Mission. Support us every time you shop.

READINGS

December/2023

December 24	Genealogy Sunday	
	Epistle	Gospel
	Rom 1:1-12	Mt 1:1-17
December 25	Glorious Birth of Our Lord (Holy Day of Obligation)	
	Epistle	Gospel
	Heb 1:1-12	Lk 2:1-20



		* LITURGY INTENTIONS *		FROM
Remember your loved ones with Mass Intentions				
Dec. 24	11:00 AM	All Parishioners	By: The Priest	
Dec.25	Midnight 11:00 AM	All Parishioners	By: The Priest	
Dec. 31	11:00 AM	Personal Intentions		

HOSPITALITY - COFFEE HOUR /2023

December 24	Marie Ghanimeh, Nagui, & Andy Guorgui
December 25	Yule Log
December 31	Dolly & Bassam Matar



*To sponsor a coffee hour pls contact Gloria Salim-Brown: 919.345.3483, gsalim@aol.com.
 Donation for coffee hour is appreciated*

PARISH OFFERING

December 17, 2023



Weekly offering	\$1,316.00
Coffee Hour (Kanafe)	\$210.00
Total Income	\$1,526.00

*Thank You for your generosity and
 your support*

Important Messages

Daily Readings

Monday: Heb 1:1-12; Lk 2:1-20
 Tuesday: Eph 1:3-14; Lk 1:46-55
 Wednesday: 2Cor 11:1-9; Mt 23:29-24:2
 Thursday: Rev 21:9-10, 21-27; Mt 2:1-12
 Friday: Heb 11:23-31; Mt 2:13-18
 Saturday: Acts 7:2, 30-34; Mt 2:19-21



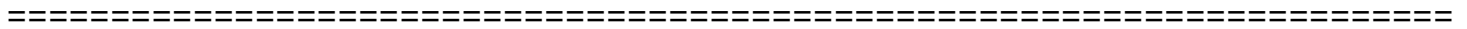
THE SANCTUARY LAMP

Is a vigil light burning 24/7 and kept near the Blessed Sacrament. The light indicates the unfathomable mystery of the Eucharistic presence of Jesus. It reminds us of the reverence due to the Sacrament. The burning light is a pious custom as a way of prolonging our adoration and prayer to honor His presence.

Thank You for Supporting Your Church

You may do so in various ways:

- By Mail at: 600 Mount Vernon Church Rd., Raleigh NC 27614
- Via our website www.saintshatbelchurch.org by clicking on Donate
- Direct Deposit to First Citizens Bank : Routing #: 053100300, Acc # 000861430571



Upcoming Second Collection

- December 25: Pastor's Collection
- January 28: United States Catholic Bishops' Worldwide Charities

UPCOMING MEETINGS & EVENTS - 2023

- Dec. 25: The Glorious Birth of Our Lord (Holy Day of Obligation)
- Dec. 26: Felicitations to the Virgin Mary
- Jan. 1: The Circumcision of Jesus (Holy Day of Obligation)
- Jan. 6: Feast of the Glorious Epiphany (Holy Day of Obligation)

Genealogy Sunday

Qurbono P. 66; Creed P. 748; Anaphora of the Twelve Apostles p. 754

Genealogy Sunday (Matthew 1:1-17)

Through righteous Joseph, the lineage of Jesus was linked to Abraham when Joseph adopted him according to the Law. With regards to Abraham, Jesus is the Son of the great promise, and with regards to King David, Jesus is the son and the heir of his royal throne. However, through the Virgin Mary, Jesus is related to the entire human family. He is the Son of God who also became the Son of Man.

Genealogy has a great importance in the establishment of the people of the Torah which was based on the Twelve Tribes due to their civic and religious rights and obligations. That is why Matthew began the Gospel with the Genealogy of Jesus in preparation for his birth. Jesus is the Son of King David and the heir of his throne. He is the Son of Abraham, the Son of the Promise, and through him all peoples will be blessed. Whereas Luke includes all of humanity in the Genealogy of Jesus tracing it back to Adam. Matthew mentions four foreign women: Tamar the Canaanite, Rahab of Jericho, Ruth of Moab, and Bethsheba the Hittite. Some of them were sinners because God wanted them to be included among his chosen people in order to show that the Genealogy of Jesus is not limited to the Jewish people alone, and that the mission of Jesus was not strictly meant for the Jews. Matthew divided the genealogy into three parts and assigned to each one fourteen generations. Some names were ignored others were added, so as to have the number (14 or 7×2), three times. This, in fact, refers to the six weeks, in the Apocalyptic literature, which points out to the coming of Jesus in the fullness of time, during the seventh and final week. Thus, marking the end of the history of mankind. Finally, Matthew emphasizes the virginity of Mary, because from her, not from Joseph, Jesus was born, who "will be called the Messiah."

What Truly is Christmas...?

More than two thousand years ago a little baby was born in a manger; an event that changed the world. This boy-child, Jesus, is the promised Messiah who stepped down from Heaven to be born as a babe, lived a sinless life and willingly gave His life as the Perfect Lamb of God to pay a sin debt that He did not owe. As foretold in the Scriptures, He did this for you; He did this for me; He did this for the whole world. When we believe this simple truth, Jesus' payment for sin is awarded to us and we are promised eternal life.

"Christmas is tenderness for the past, courage for the present, hope for the future. It is a fervent wish that every cup may overflow with blessings rich and eternal, and that every path may lead to peace." May you have: "The gladness of Christmas which is hope; The spirit of Christmas which is peace; The heart of Christmas which is love."

